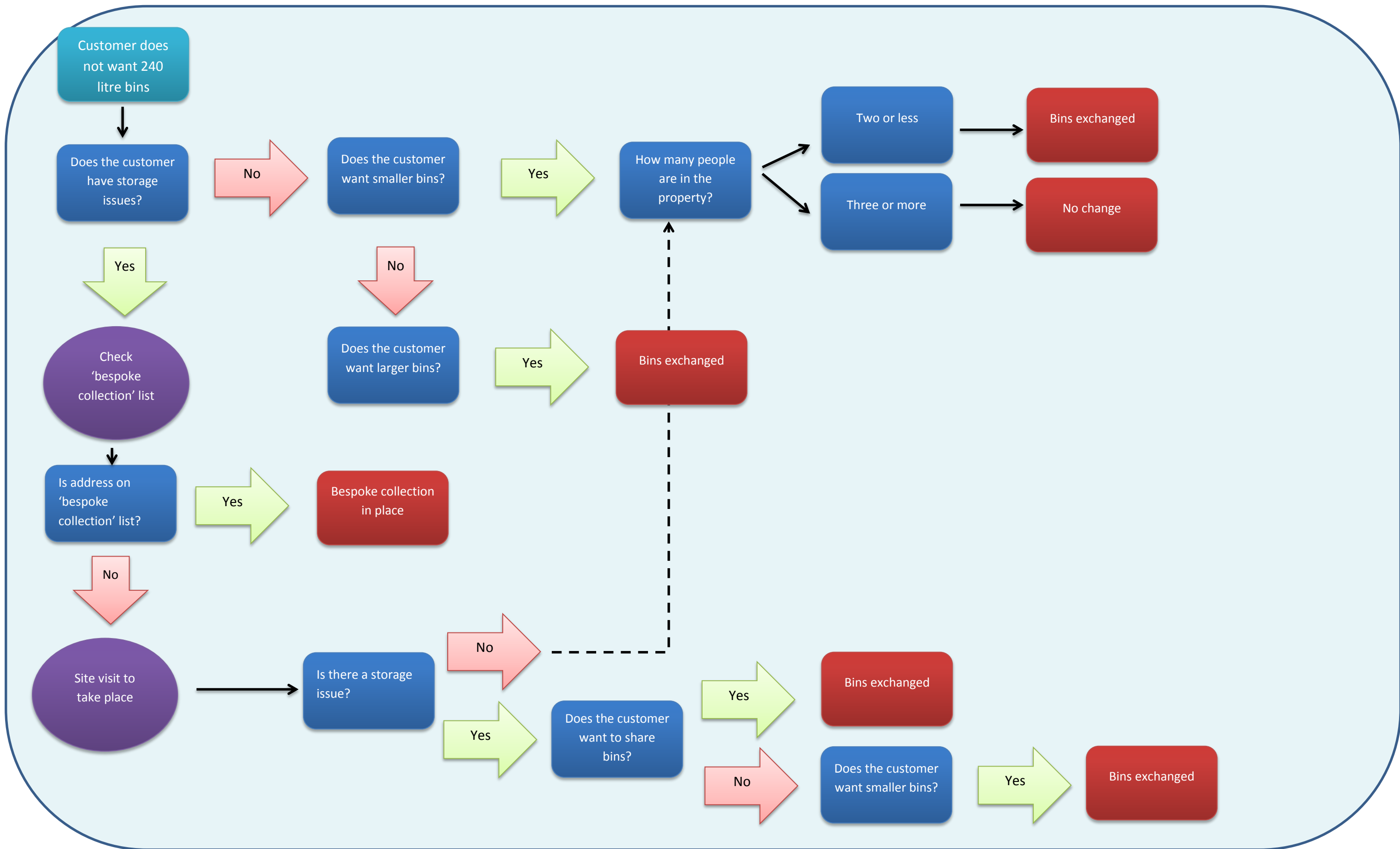
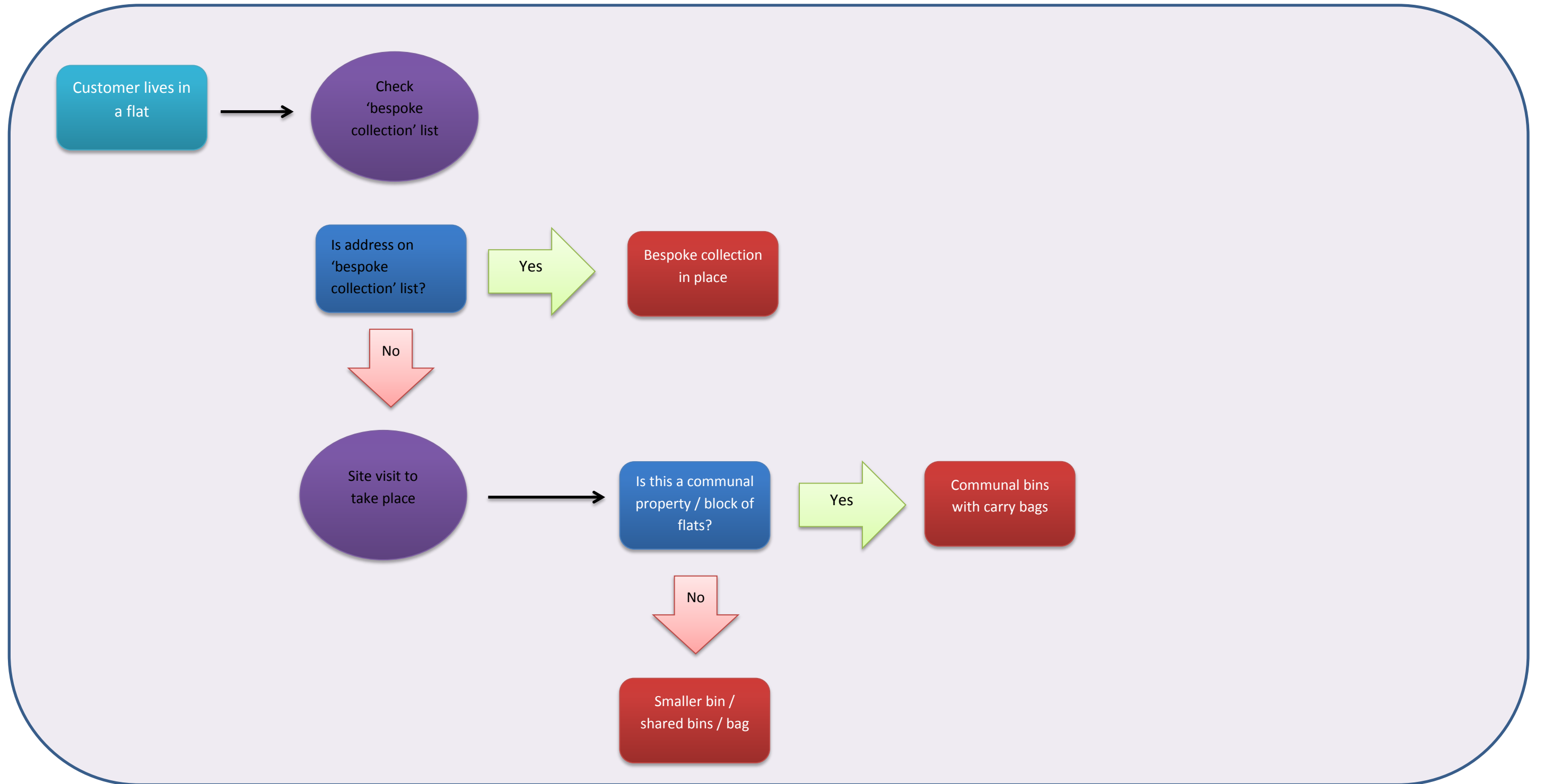


Recycling Service – Bespoke Collection Options

There are three factors to bear in mind when deciding which bespoke option is appropriate for a particular household with the default or standard offer being two X 240ltr wheeled bins. However, the new service is not a one size fits all so the Council is offering a number of options depending on a combination of storage capacity at the property and the individual householders needs. The decision tree or chart below has been designed to define the most appropriate containment option based on a logical decision making process.





Containment	Circumstances (examples)
240 litre bin	Standard
140 litre bin	Fewer than 2 residents
360 litre bin	Recycle more / large household
Share 240 litre bin	Storage issues / small household
Share 360 litre bin	Storage issues / small household
Carry bag (communal)	Communal properties
Sack collection	Refuse is currently sack collection

